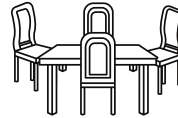


# Traditional Meeting Spaces

VS

# Thought Design Learning Lab

Large, heavy 8 or 10 person tables and chairs



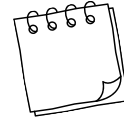
5 ft tables on wheels that can be arranged to suit your group needs, along with additional furniture options

Additional costs for food & beverages



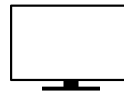
Coffee, tea, and water provided with all meeting space rentals

Additional cost or bring your own supplies



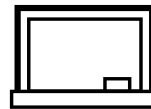
Sticky notes, markers, pens, highlighters, and notepaper available on all tables

Additional costs for TV/AV set-up



TV/AV set-up included in all meeting space rentals

Limited whiteboard space or none at all



30+ linear feet of writable whiteboard wall

Limited catering flexibility



Your choice - onsite chef-prepared meals OR bring in your own food

Meeting spaces are often located in rooms with little to no natural light and few windows



The Thought Design meeting space overlooks the Rogue River and includes access to outdoor seating & boardwalk